

# Steel River East Battery Energy Storage System (BESS)

September 2024



**Ausgrid is proposing a battery in the Steel River Industrial Estate in Mayfield West to add energy storage to the local electricity network.**

**We're planning for the energy network of the future, now.**

**This battery will store 400MWh of energy – that's enough to power over 27,000 Ausgrid households a day.**

As we switch to renewable sources like solar and wind power, we need more energy storage to make sure we have power when the sun isn't shining, and the wind isn't blowing. This will mean we can provide our customers with more sustainable, more reliable and more affordable power.

NSW needs six times more energy storage before 2030. Projects like the Steel River East BESS are important to help keep our electricity supply stable.

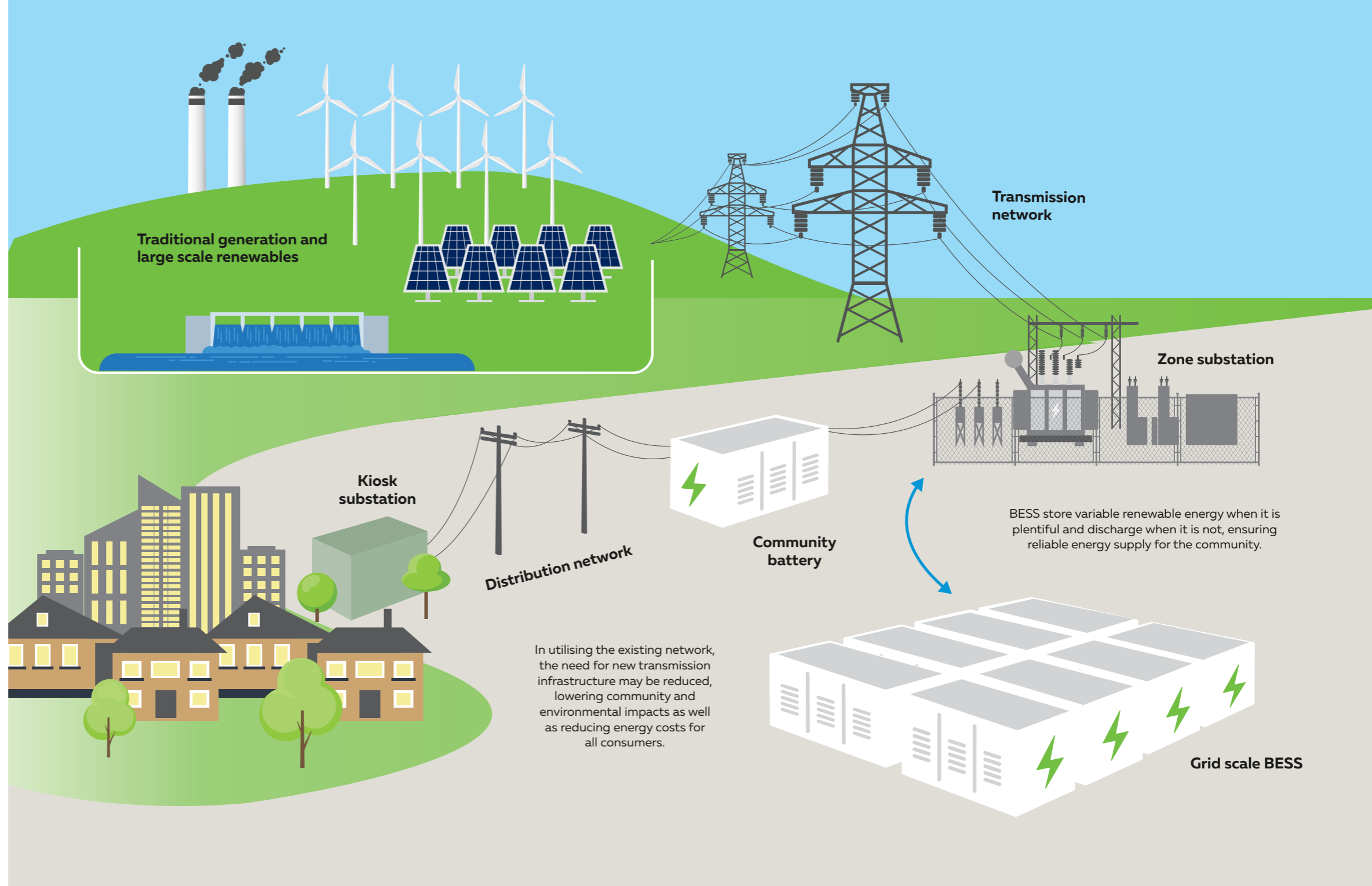


## What is a BESS?

A Battery Energy Storage System (BESS) is a group of large rechargeable batteries, connected to form one very large battery. BESS collect energy, store it when there is a lot and then release it when there is high demand for electricity. These large batteries are critical to ensuring the reliability of electricity supply for households and businesses.

By connecting BESS to our existing substations, we are reducing the impact on our communities and the environment, and decreasing the need to build more large transmission and distribution lines, which helps reduce costs and makes electricity more affordable.

Ausgrid is also connecting community batteries to our network infrastructure. Community batteries are the same technology, at a smaller size and help manage energy from roof top solar, locally.



**Enabling more renewable energy**



**Reducing the need for new transmission lines**



**Local construction jobs**



**Improving grid stability and reliability**



**Enabling more affordable electricity**

## BESS support the clean energy transition and make the energy network more:



### Reliable

BESS enable more renewable energy to come online by storing energy when there is more than we need and releasing it when it's required. This keeps the power supply steady, even when the sun isn't shining or the wind isn't blowing, providing a more resilient and reliable electricity network.



### Affordable

BESS connected to Ausgrid's current network better utilises existing infrastructure, reducing the need for additional investment making the cost of electricity cheaper over time.



### Sustainable

BESS enable more renewable energy like wind and solar to connect to the energy network. By connecting to our existing substations, it avoids the need for new transmission lines, reducing the environmental and community impacts of large infrastructure projects.

## Planning and approval process

Ausgrid is proposing the BESS to be next to the existing substation in Steel River Industrial Estate at 1 McIntosh Drive, Mayfield West. If approved, the project will be built and operated by a third party.

We are in early planning stage. We are engaging with stakeholders and community to help us better understand how the project might affect the environment and the community.

We want to hear from the local community and answer any questions you might have. The feedback we get from this early consultation will help shape the project.

**We are here**

ONGOING COMMUNITY CONSULTATION AND ENGAGEMENT

- 1 Late 2024**
  - Submit Scoping Report to NSW Department of Planning, Housing and Industry and request SEARS
  - Prepare Environmental Impact Statement (EIS)
- 2 Early 2025**
  - Submit EIS to NSW Department of Planning, Housing and Industry
  - EIS Exhibition
- 3 Mid 2025**
  - Project determination
- 4 Mid to late 2025**
  - Start construction

## Join us

We're holding a webinar to share more about the Steel River East BESS and introduce the project team.

**When: Wednesday 16 October**  
**Time: 1.30-2.30pm**



For more information and to register your interest, scan the QR code or visit: [yoursay.ausgrid.com.au/steelrivereastbess](https://yoursay.ausgrid.com.au/steelrivereastbess)

To talk to the project team, please email: [batteries@ausgrid.com.au](mailto:batteries@ausgrid.com.au)

## Who is Ausgrid

Ausgrid is a distribution network service provider. We operate, maintain, repair and build the electricity network in Sydney, the Central Coast and the Hunter.

We distribute electricity to your home or business, maintain existing infrastructure, and invest in new technologies to make the network more sustainable, reliable and affordable. We also need to make sure the network is ready for our customers' future needs.

## Find out more and share your feedback

We want to hear from local community members about our project and answer your questions.

Register to stay up-to-date or contact our project team for more information. You can also find information on our website.



**1800 574 044**

Monday to Friday 9am to 4:30pm



**batteries@ausgrid.com.au**



Ausgrid BESS Project Team  
GPO Box 4009 Sydney NSW 2001



If you need an interpreter, please call the Translating and Interpreting Service on **131 450** and ask them to call the project team on **1800 574 044**. The interpreter will then help you with translation.